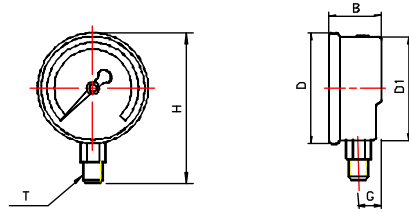


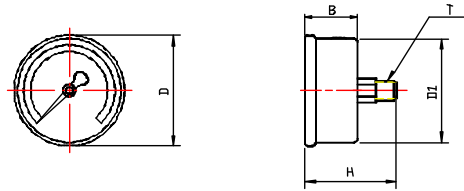
**INSTALLATION DIMENSIONS**

UNIT mm(inch)

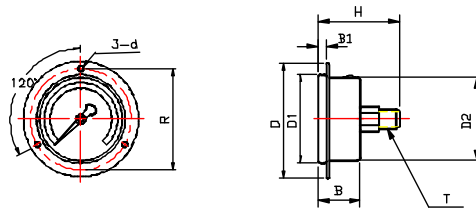
LM TYPE



CBM TYPE



CBM-F TYPE



MODEL	B	B1	D	D1	D2	G	H	T	d	R
G40LM	28.1(0.86)	--	φ48(1.9)	φ41.7(1.6)	--	8(0.31)	58.7(2.31)	1/8"	--	
G40CBM	26(1.02)	--	φ48(1.9)	φ41.5(1.6)	--	--	43(1.69)	1/8"	--	
G50LM	32(1.26)	--	φ57(2.2)	φ53(2.1)	--	10.5(0.41)	76(3.0)	1/4"	--	
G50CBM	26(1.02)	--	φ57(2.2)	φ51(2.0)	--	--	48(1.9)	1/4"	--	
G60LM	32(1.26)	--	φ71.5(2.8)	φ63.5(2.5)	--	11(0.43)	88.5(3.48)	1/4"	--	
G60CBM	33(1.30)	--	φ72(2.83)	φ63.5(2.5)	--	--	55(2.16)	1/4"	--	
G60CBM-F	33(1.30)	6.7(0.26)	φ87.5(3.4)	φ72(2.8)	63(2.48)	--	55(2.16)	1/4"	φ4.1(0.16)	80(3.15)
G100LM	40(1.57)	--	φ110(4.3)	φ99(3.89)	--	14(0.55)	141(5.55)	1/2"	--	
G100CBM	36(1.41)	--	φ110(4.3)	φ98(3.86)	--	--	74(2.91)	1/2"	--	
G100CBM-	36(1.41)	7.5(0.29)	φ131.8(5.1)	φ110(4.3)	φ98(3.85)	--	74(2.91)	1/2"	φ5(0.19)	117(4.61)

**TDZ**

**ACCESORIES & OTHERS**  
FILTRATION CARTS

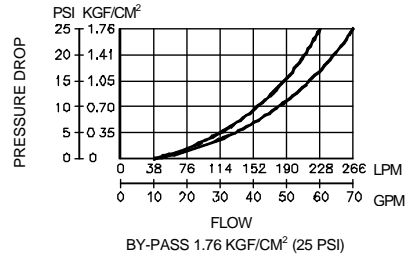
**FEATURES**



- Dirt indicator instructs when the filtering element needs replacement. No special tool needed for the change of element.
- Installed with 1/2 HP, 110/220VAC single phase motor for convenient plug-in application.
- Buggy is loaded on a portable hand-push cart, one unit can serve many stations.
- 10 micron and 25 micron element available for selection.
- With optional filter element (indicate: 10-W, when ordering), it can remove both dirt and water from system.

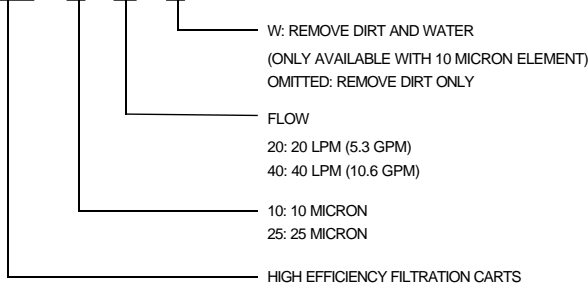
**APPLICATION**

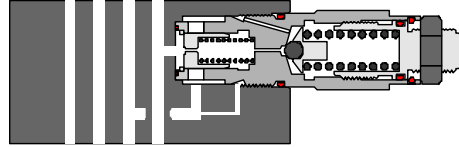
- To use periodically as a supplement filtration system for all hydraulic systems in the plant.
- To clean the hydraulic system before and after the periodical maintenance or repair.
- To fill the oil for a new hydraulic system.
- To reclaim the contaminated oil.



**HOW TO ORDER**

**HFB - 10 - 20 - W**





**SYMBOLS**



P T B A

MRF-02P



P T B A

MRF-02A



P T B A

MRF-02B



P T B A

MRF-02D

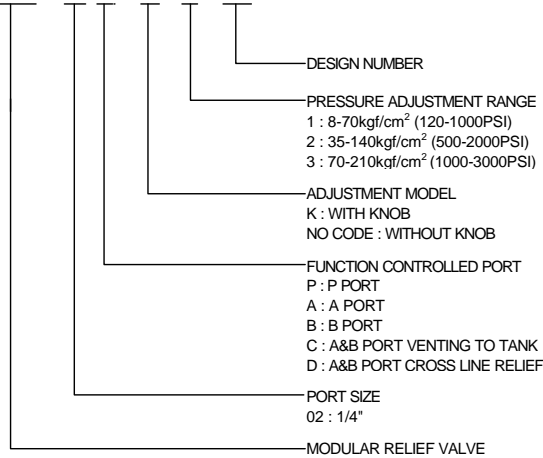


P T B A

MRF-02C

**HOW TO ORDER**

**MRF - 02 P - K - 1 - 20**



**SPECIFICATIONS**

MAX. OPERATING PRESSURE	210 kgf/cm <sup>2</sup> (3000 PSI)
MAX. FLOW CAPACITY	35 LPM (9.3 GPM)

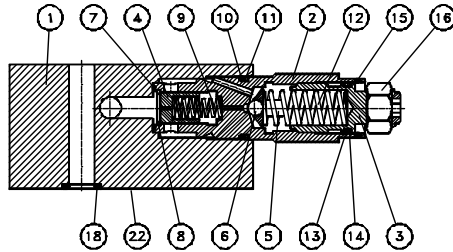
ABINA S.L



**PRESSURE CONTROLS**  
MODULAR RELIEF VALVE **MRF 02 SERIES**

---

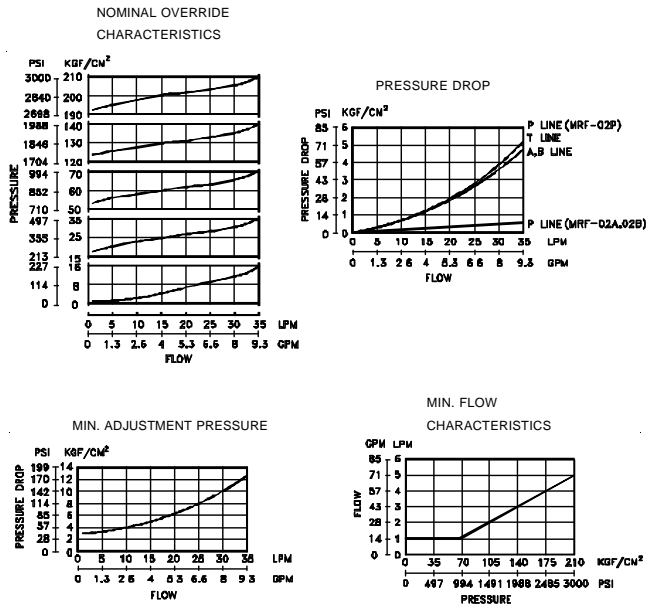




NO.	DESCRIPTION	SPEC.	NO.	DESCRIPTION	SPEC.
7	O-RING	M12	14	BACK-UP RING	AS568-014
10	O-RING	AS568-017(70°)	18	O-RING	AS568-012(90°)
13	O-RING	AS568-014(70°)			

**PERFORMANCE CURVES**

TEST FLUID VISCOSITY : 35 cSt  
(175 SSU)

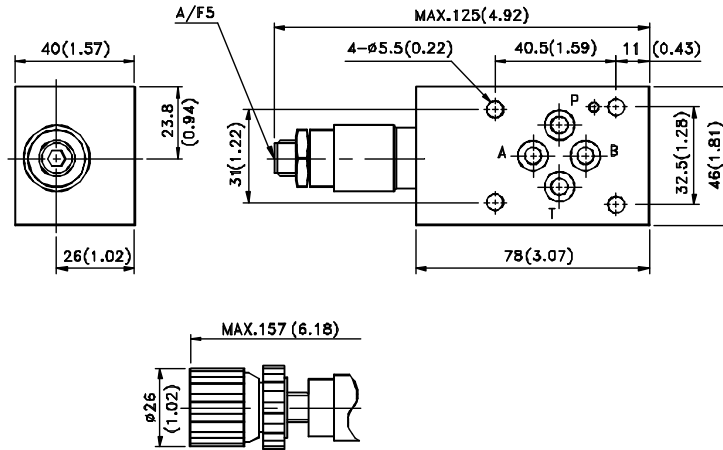




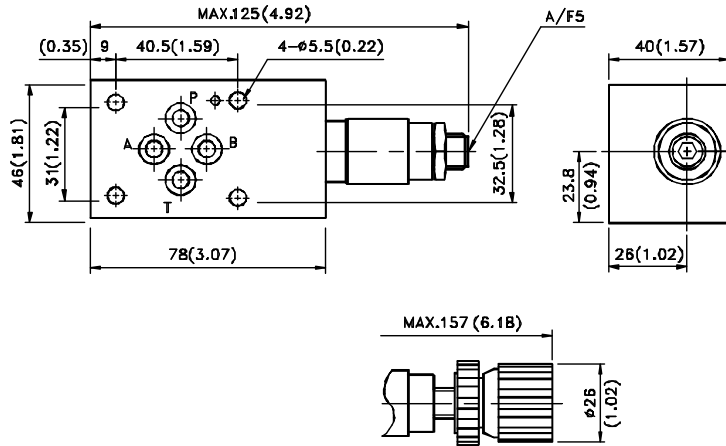
**INSTALLATION DIMENSIONS**

MRF - 02A - \* - \* - 20

UNIT: mm (inch)  
WEIGHT: 1.5kgs (3.3 lbs)



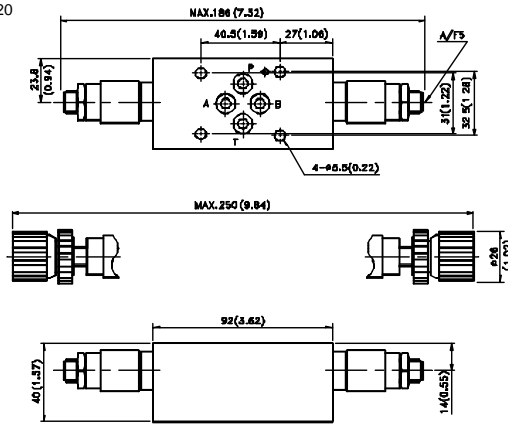
MRF - 02P/B - \* - \* - 20



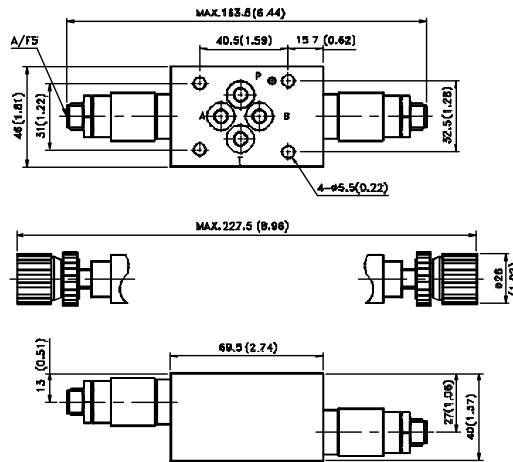


UNIT: mm(inch)  
WEIGHT: 1.7 kgs(3.75 lbs)

MRF - 02C - \* - \* - 20



MRF - 02D - \* - \* - 20

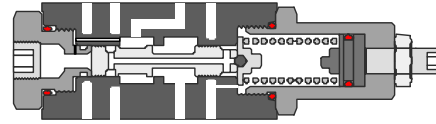
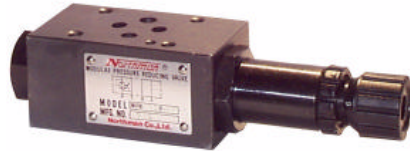


ABINA S.L

Pol Ind Les Comes C/Alemania, 43 Nave 1  
08700 Igualada (Barcelona)  
Telf 93 805 24 34 Fax 93 805 25 44  
[www.abina.com](http://www.abina.com)  
email: [info@abina.com](mailto:info@abina.com)



**PRESSURE CONTROLS**  
MODULAR PRESSURE REDUCING VALVE **MPR 02 SERIES**



**SYMBOLS**



MPR-02P



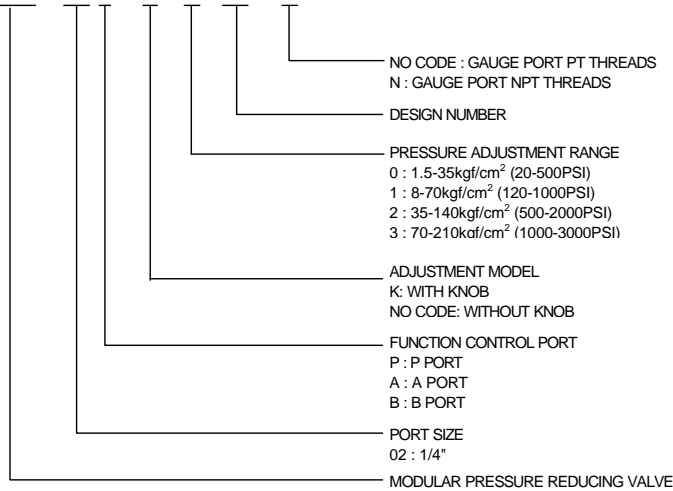
MPR-02A



MPR-02B

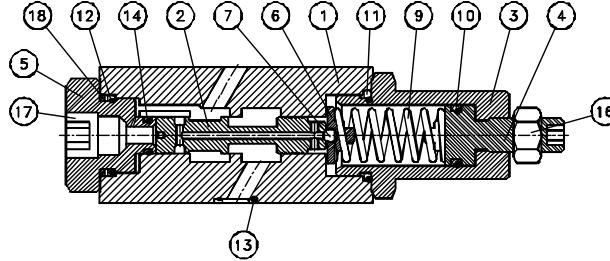
**HOW TO ORDER**

**MPR - 02 P - K - 1 - 20 - N**



**SPECIFICATIONS**

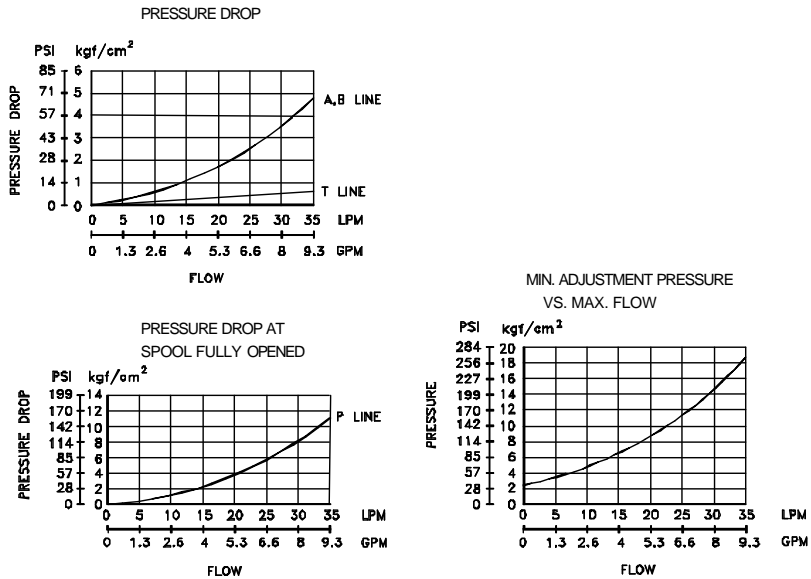
MAX. OPERATING PRESSURE	210 kgf/cm <sup>2</sup> (3000 PSI)
MAX. FLOW CAPACITY	35 LPM (9.3 GPM)



NO.	DESCRIPTION	SPEC.	NO.	DESCRIPTION	SPEC.
10	O-RING	P14(70°)	13	O-RING	AS568-02(90°)
11	O-RING	P22(90°)	14	O-RING	P8(70°)
12	O-RING	P20(90°)	18	BACK-UP RING	P20

**PERFORMANCE CURVES**

TEST FLUID VISCOSITY : 35 cSt (175 SSU)  
TEST TEMPERATURE : 50°C (122°F)

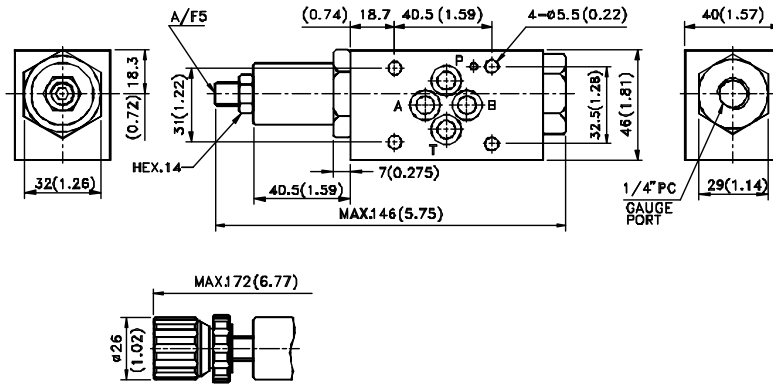




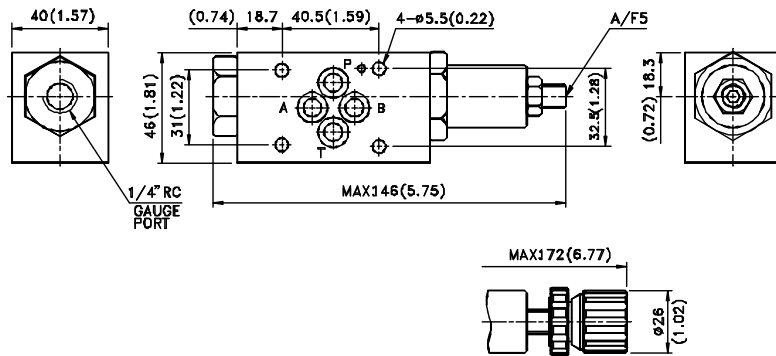
**INSTALLATION DIMENSIONS**

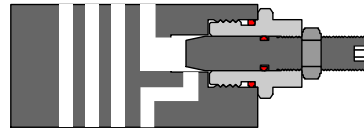
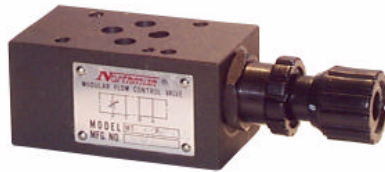
MPR - 02B - \* - \* - 20

UNIT: mm(inch)  
WEIGHT: 1.2 kgs(2.65 lbs)



MPR - 02P/A - \* - \* - 20

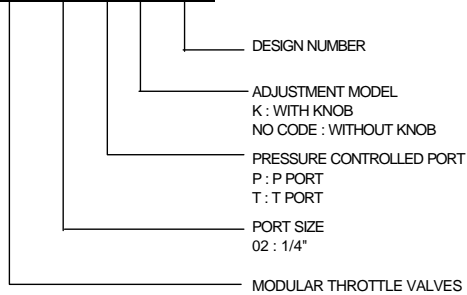




**SYMBOLS**



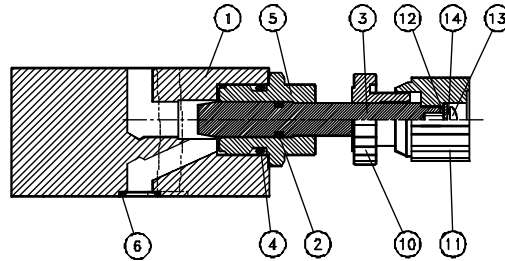
**HOW TO ORDER**



**SPECIFICATIONS**

MAX. OPERATING PRESSURE	210 kgf/cm <sup>2</sup> (3000 PSI)
MAX. FLOW CAPACITY	35 LPM (9.3 GPM)



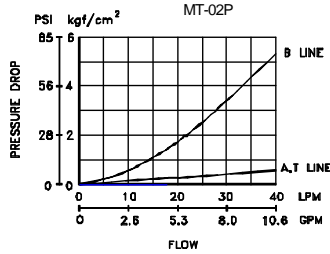


NO.	DESCRIPTION	SPEC.	NO.	DESCRIPTION	SPEC.
2	O-RING	P8(90°)	6	O-RING	AS568-012(90°)
4	O-RING	P18(90°)			

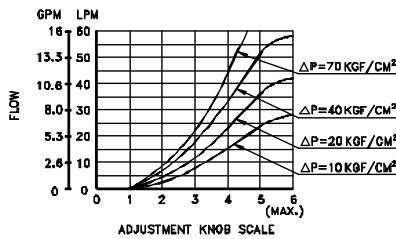
**PERFORMANCE CURVES**

TEST FLUID VISCOSITY : 35 cSt (175 SSU)  
TEST TEMPERATURE : 50°C (122°F)

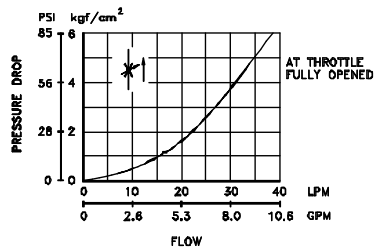
PRESSURE DROP FOR EACH PORT



METERED FLOW VS. DIAL POSITION



PRESSURE DROP AT THROTTLE FULLY OPENED

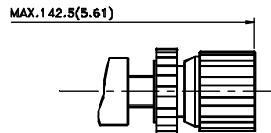
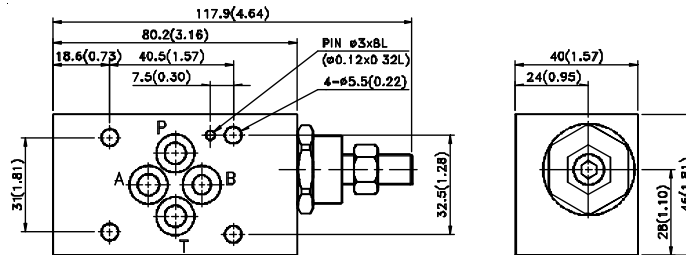




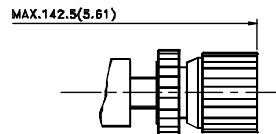
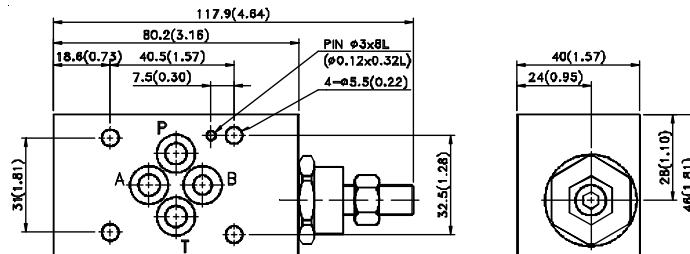
**INSTALLATION DIMENSIONS**

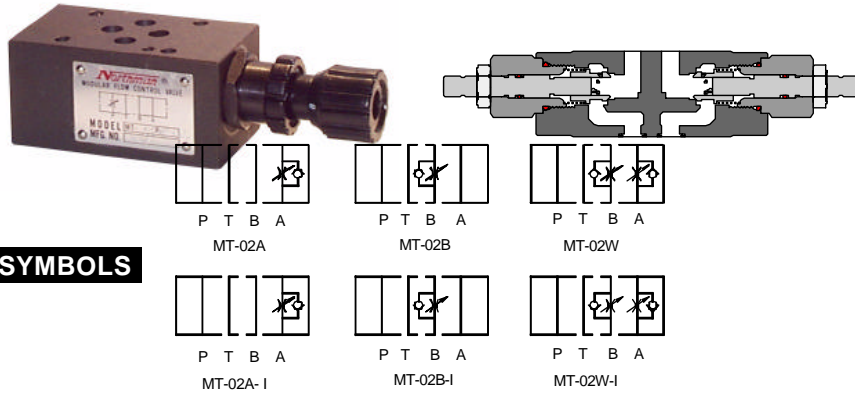
MT - 02P - K - 30

UNIT: mm(inch)  
WEIGHTS: 1.2 kgs(2.65 lbs)



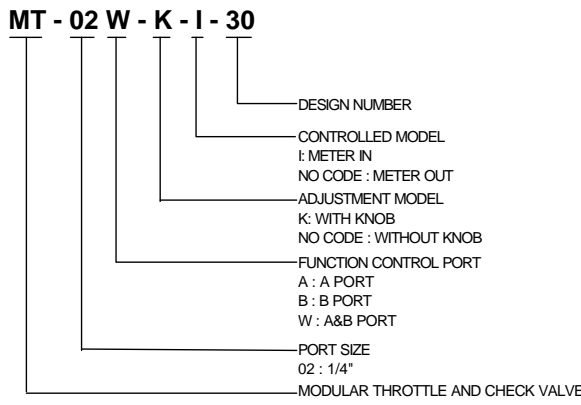
MT - 02 - K - 30





**SYMBOLS**

**HOW TO ORDER**



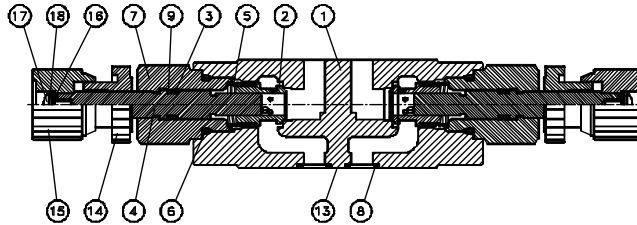
**SPECIFICATIONS**

# ABINA S.L

**TDZ**

**FLOW CONTROLS**  
MODULAR THROTTLE VALVE AND CHEK VALVE **MT 02 SERIES**

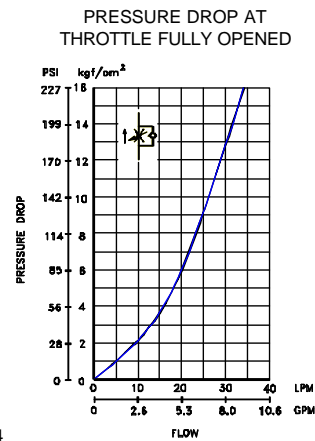
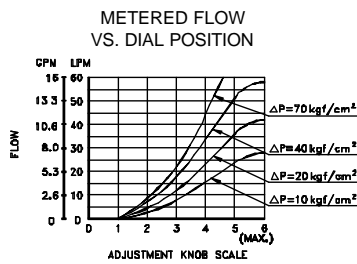
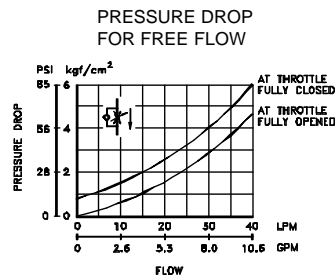
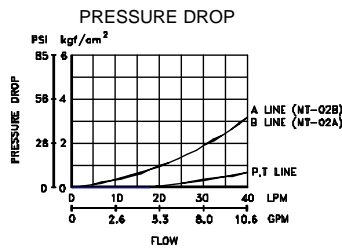
MAX. OPERATING PRESSURE	210 kgf/cm <sup>2</sup> (3000 PSI)
MAX. FLOW CAPACITY	35 LPM (9.3 GPM)



NO.	DESCRIPTION	SPEC.	NO.	DESCRIPTION	SPEC.
3	O-RING	P8(90°)	8	O-RING	AS568-012(90°)
6	O-RING	P18(90°)	9	BACK-UP RING	P8

**PERFORMANCE CURVES**

TEST FLUID VISCOSITY : 35 cSt (175 SSU)  
TEST TEMPERATURE : 50°C (122°F)

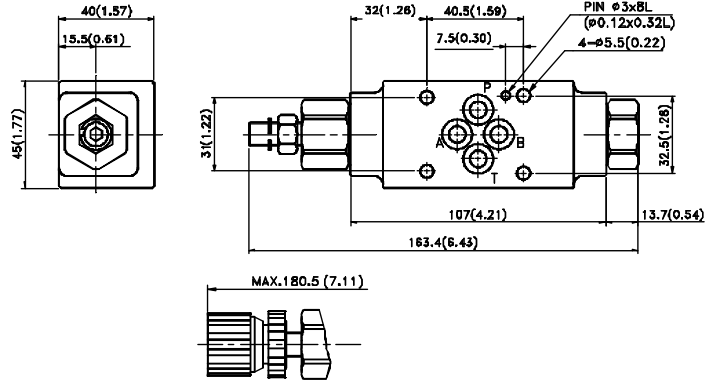




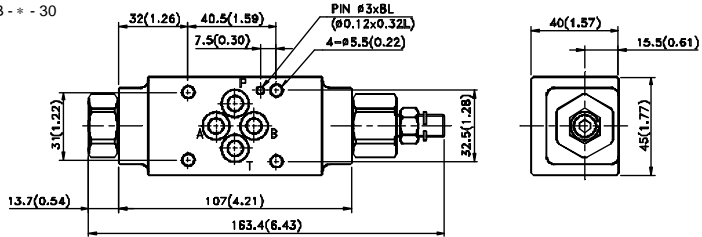
**INSTALLATION DIMENSIONS**

MT - 02A - \* - 30

UNIT: mm(inch)  
WEIGHT: 1.2 kgs(2.65 lbs)

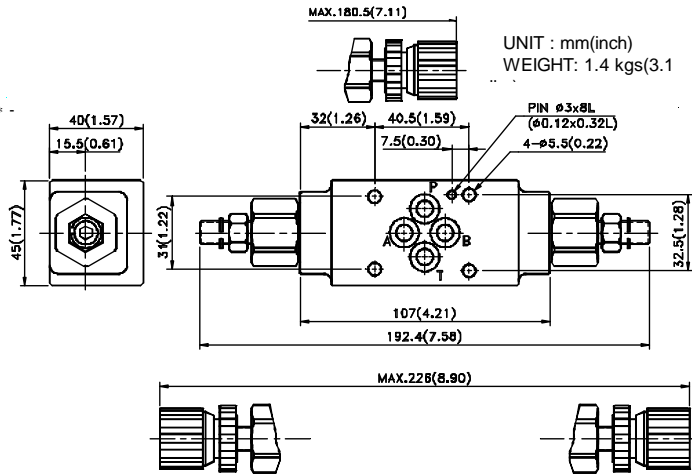


MT - 02B - \* - 30



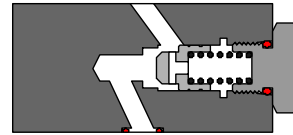
MT - 02W - \* - 30

UNIT : mm(inch)  
WEIGHT: 1.4 kgs(3.1)

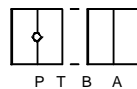




**DIRECTIONAL CONTROLS**  
MODULAR CHECK VALVE MC 02 SERIES



**SYMBOLS**



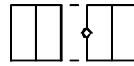
MC-02P



MC-02T



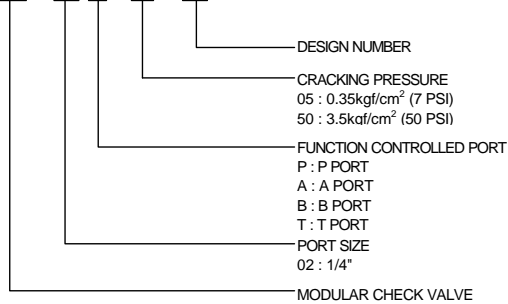
MC-02A



MC-02B

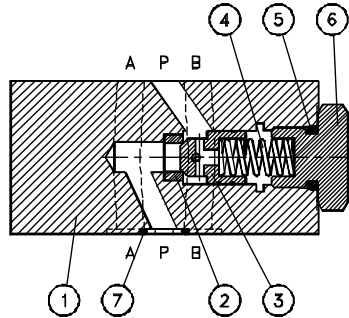
**HOW TO ORDER**

**MC - 02 P - 50 - 20**



**SPECIFICATIONS**

MAX. OPERATING PRESSURE	210 kgf/cm <sup>2</sup> (3000 PSI)
MAX. FLOW CAPACITY	35 LPM (9.3 GPM)

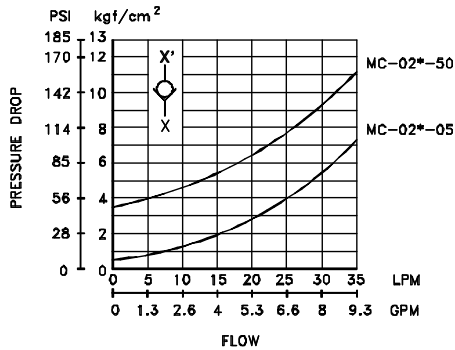


NO.	DESCRIPTION	SPEC.	NO.	DESCRIPTION	SPEC.
5	O-RING	P12.5(90°)	7	O-RING	AS568-012(90°)

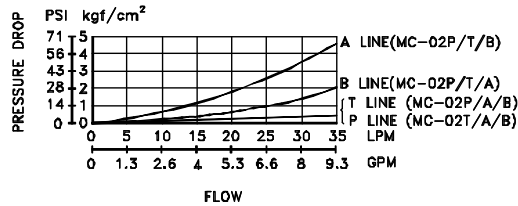
**PERFORMANCE CURVES**

TEST FLUID VISCOSITY : 35 cSt (175 SSU)  
TEST TEMPERATURE : 50°C (122°F)

PRESSURE DROP  
FOR FREE FLOW



PRESSURE DROP



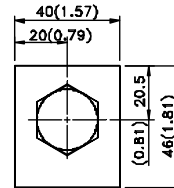
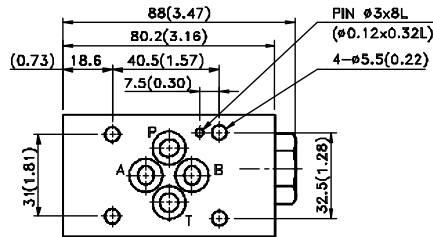




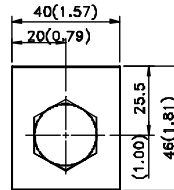
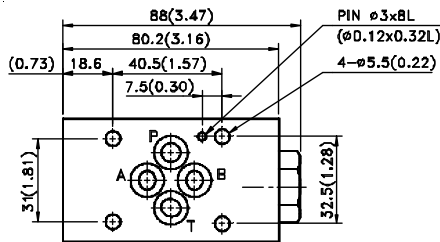
**INSTALLATION DIMENSIONS**

MC - 02P - \*\* - 20

UNIT: mm(inch)  
WEIGHT: 1.2 kgs(2.65 LBS)



MC - 02T - \*\* - 20



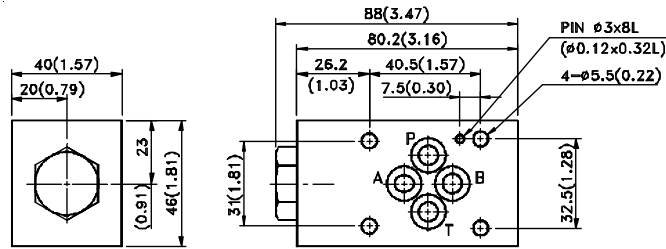
# ABINA S.L



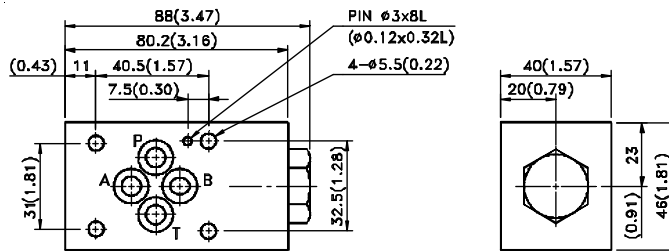
**DIRECTIONAL CONTROLS**  
 MODULAR CHECK VALVE MC 02 SERIES

MC - 02A - \*\* - 20

UNIT: mm(inch)  
 WEIGHT: 1.2 kgs(2.65 lbs)

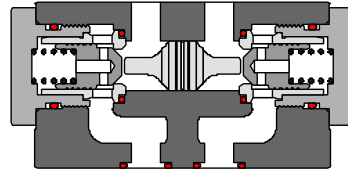
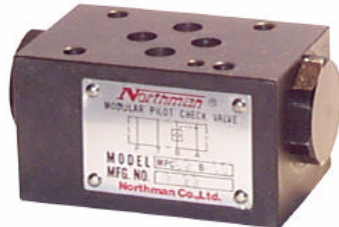


MC - 02B - \*\* - 20

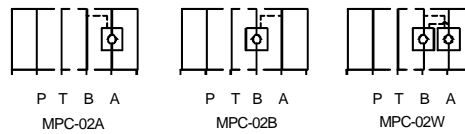


**TDZ**

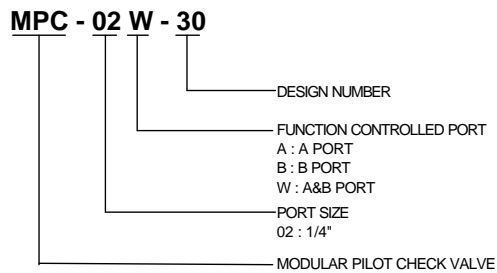
**DIRECTIONAL CONTROLS**  
 MODULAR PILOT CHECK VALVE **MPC 02 SERIES**



**SYMBOLS**

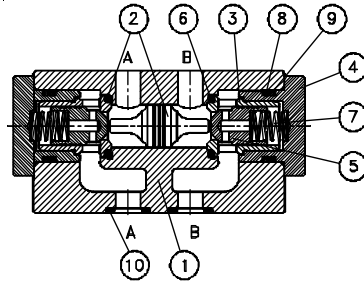


**HOW TO ORDER**



**SPECIFICATIONS**

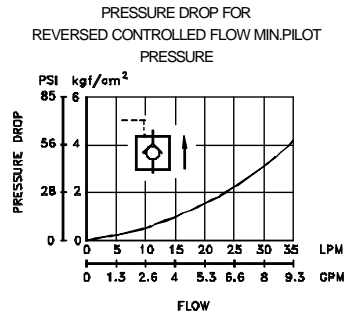
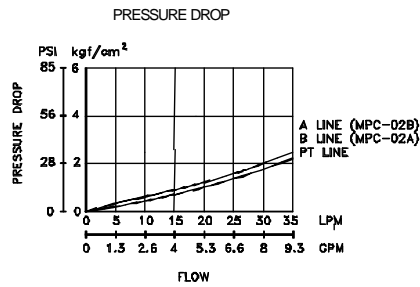
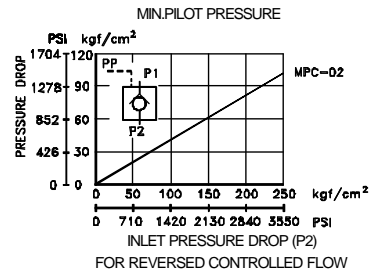
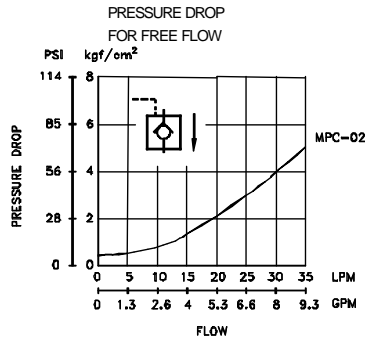
MAX. OPERATING PRESSURE	210 kgf/cm <sup>2</sup> (3000 PSI)
MAX. FLOW CAPACITY	35 LPM (9.3 GPM)
CRACKING PRESSURE IN FREE FLOW	0.6 kgf/cm <sup>2</sup> (8.5 PSI)
PILOT RATIO	1 : 2.25



NO.	DESCRIPTION	SPEC.	NO.	DESCRIPTION	SPEC.
6	O-RING	AS568-015(70°)	9	BACK-UP RING	AS568-017
8	O-RING	AS568-017(70°)	10	O-RING	AS568-012(90°)

**PERFORMANCE CURVES**

TEST FLUID VISCOSITY : 35 cSt (175 SSU)  
 TEST TEMPERATURE : 50°C (122°F)

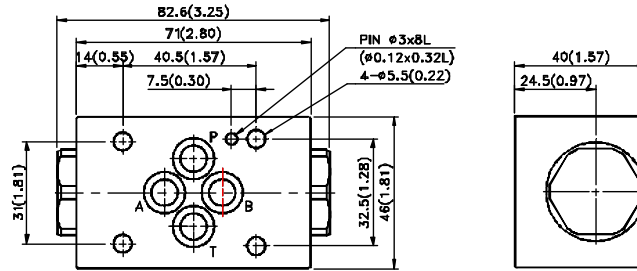




**INSTALLATION DIMENSIONS**

MPC - 02» - 30

UNIT: mm(inch)  
WEIGHT: 1.1 kgs(2.43 LBS)



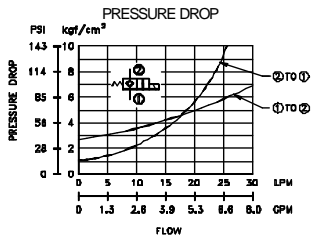


**DIRECTIONAL CONTROLS**  
MODULAR SOLENOID CHECK VALVE **MSC 02 SERIES**

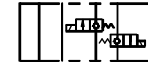


**PERFORMANCE CURVES**

TEST FLUID VISCOSITY : 35 cSt (175 SSU)  
TEST TEMPERATURE : 50°C (122°F)



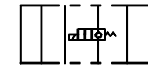
**SYMBOLS**



P T B A  
MSC-02W-\*\*\*\*\*-NC-



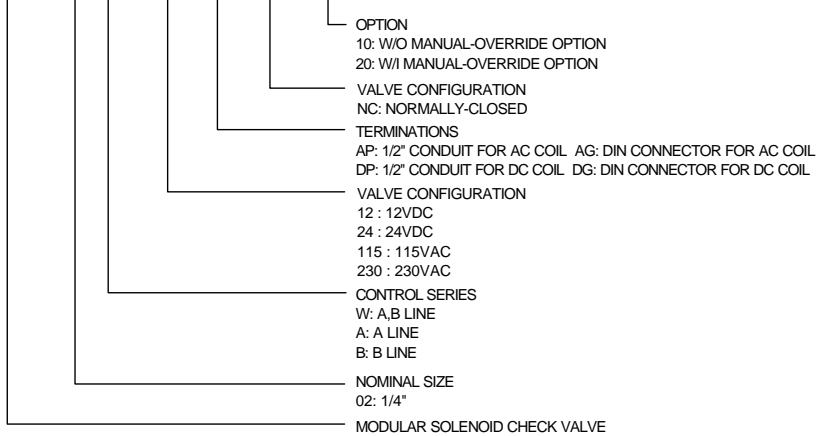
P T B A  
MSC-02A-\*\*\*\*\*-NC-\*



P T B A  
MSC-02B-\*\*\*\*\*-NC-

**HOW TO ORDER**

**MSC - 02 W - 230 AP - NC - 10**



**SPECIFICATIONS**

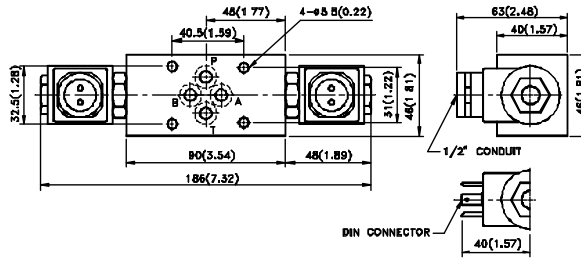
MAX. OPERATING PRESSURE	210 kgf/cm (3000 PSI)
MAX. FLOW CAPACITY	30 LPM (8 GPM)



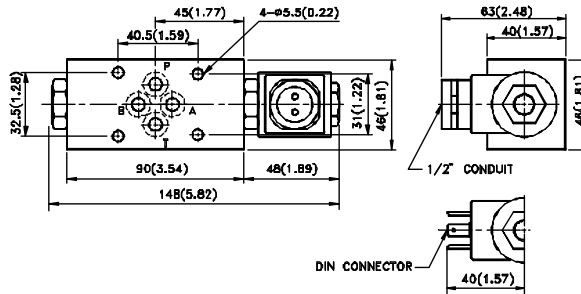
**INSTALLATION DIMENSIONS**

MSC - 02W - \*\*\*\*\* - \* - \* - \*

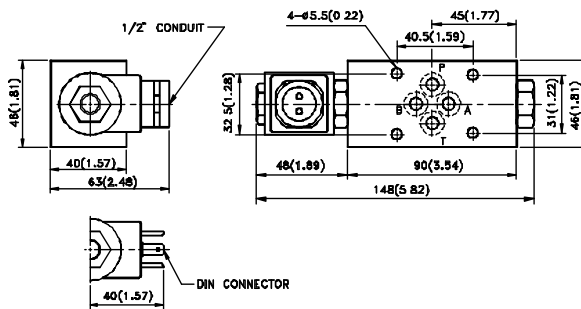
UNIT: mm(inch)



MSC - 02A - \*\*\*\*\* - \* - \* - \*

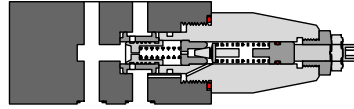


MSC - 02B - \*\*\*\*\* - \* - \* - \*





**PRESSURE CONTROLS**  
MODULAR RELIEF VALVE MRF 03 SERIES



**SYMBOLS**



P T B A

MRF-03P



P T B A

MRF-03A



P T B A

MRF-03B



PT B A

MRF-03D

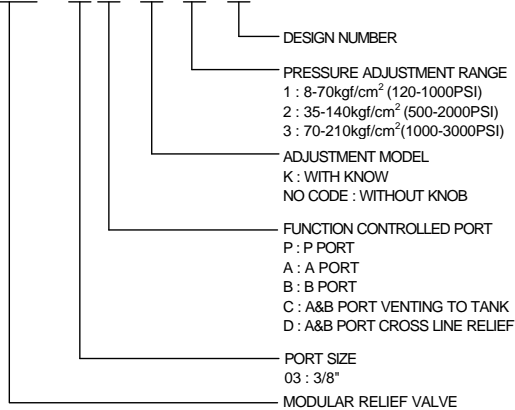


PT B A

MRF-03C

**HOW TO ORDER**

**MRF - 03 P - K - 1 - 30**



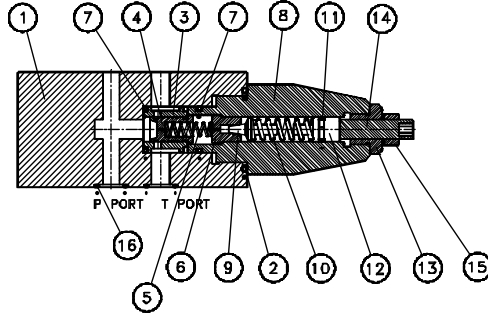
**SPECIFICATIONS**

MAX. OPERATING PRESSURE	210 kgf/cm <sup>2</sup> (3000 PSI)
MAX. FLOW CAPACITY	70 LPM (20 GPM)





**PRESSURE CONTROLS**  
MODULAR RELIEF VALVE MRF 03 SERIES



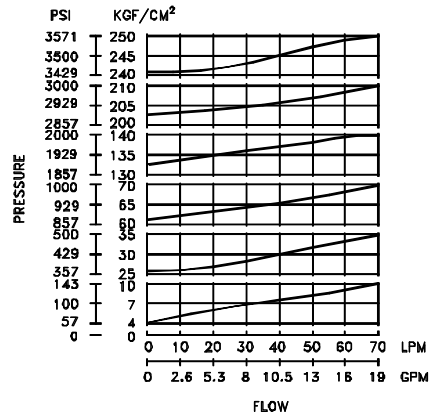
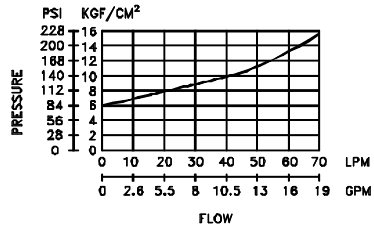
NO.	DESCRIPTION	SPEC.	NO.	DESCRIPTION	SPEC.
2	O-RING	G35(70°)	11	O-RING	P9(70°)
7	O-RING	P18(70°)	16	O-RING	AS568-014(90°)

**PERFORMANS CURVES**

TEST FLUID VISCOSITY : 35 cSt (175 SSU)  
TEST TEMPERATURE : 50°C (122°F)

NOMINAL OVERRIDE  
CHARACTERISTICS

MIN. ADJUSTMENT PRESSURE



ABINA S.L



**PRESSURE CONTROLS**  
MODULAR RELIEF VALVE **MRF 03 SERIES**

---

2-27

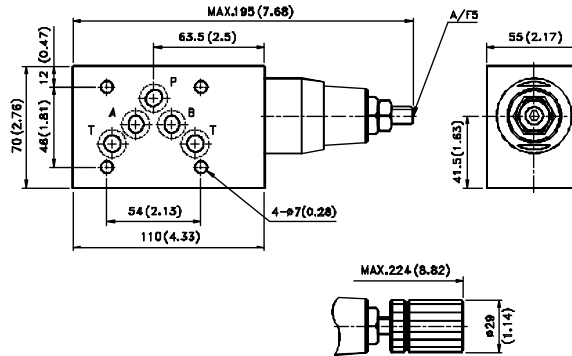
Pol Ind Les Comes C/Alemania, 43 Nave 1  
08700 Igualada (Barcelona)  
Telf 93 805 24 34 Fax 93 805 25 44  
[www.abina.com](http://www.abina.com)  
email: [info@abina.com](mailto:info@abina.com)



**INSTALLATION DIMENSIONS**

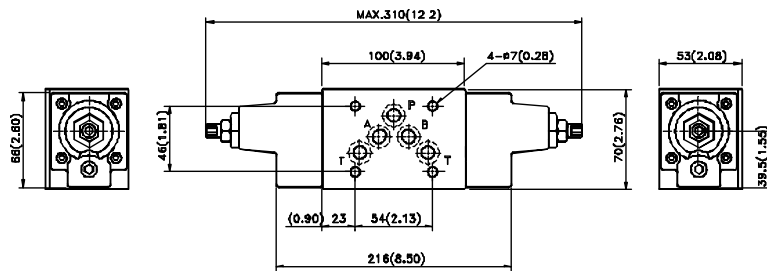
MRF-03P/A/B-\*\*\*-30

UNIT: mm(inch)  
WEIGHT :3.3kgs(7.28lbs)



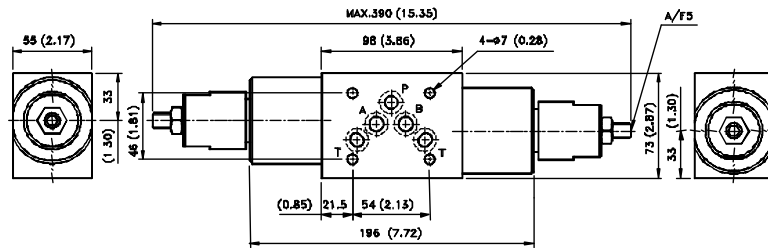
MRF - 03C - \* - \* - 30

WEIGHT: 3.7 kgs(8.16 lbs)



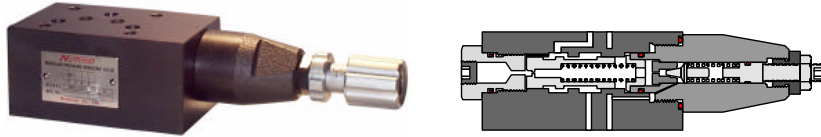


MRF - 03D - \* - \* - 30





**PRESSURE CONTROLS**  
 MODULAR PRESSURE REDUCING VALVE **MPR 03 SERIES**



**SYMBOLS**



P T B A

MPR-03P



P T B A

MPR-03A

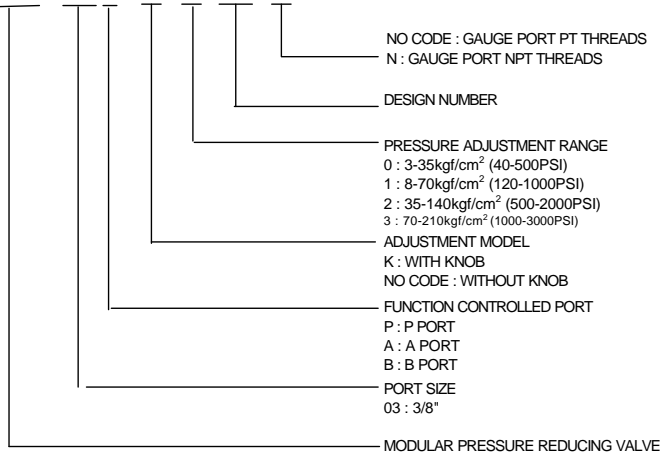


P T B A

MPR-03B

**HOW TO ORDER**

**MPR - 03 P - K - 0 - 30 - N**



**SPECIFICATIONS**

MAX. OPERATING PRESSURE	210 kgf/cm <sup>2</sup> (3000 PSI)
MAX. FLOW CAPACITY	70 LPM (20 GPM)

ABINA S.L



**PRESSURE CONTROLS**  
MODULAR PRESSURE REDUCING VALVE **MPR 03 SERIES**

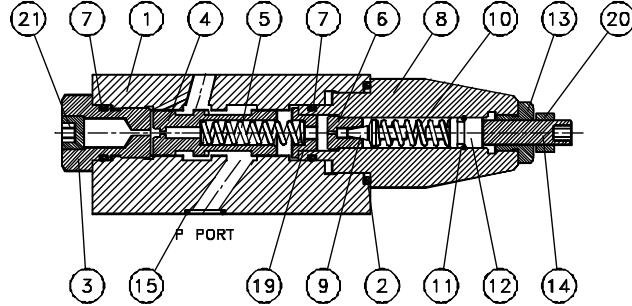
---

2-31

Pol Ind Les Comes C/Alemania, 43 Nave 1  
08700 Igualada (Barcelona)  
Telf 93 805 24 34 Fax 93 805 25 44  
[www.abina.com](http://www.abina.com)  
email: [info@abina.com](mailto:info@abina.com)



**PRESSURE CONTROLS**  
MODULAR PRESSURE REDUCING VALVE MPR 03 SERIES

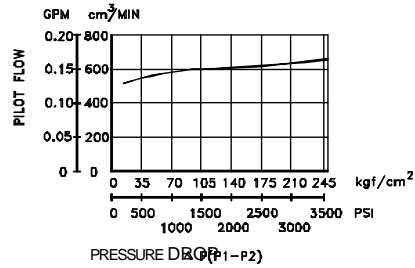


NO.	DESCRIPTION	SPEC.	NO.	DESCRIPTION	SPEC.
2	O-RING	G35(70°)	11	O-RING	P9(70°)
7	O-RING	P18(70°)	15	O-RING	AS568-014(90°)

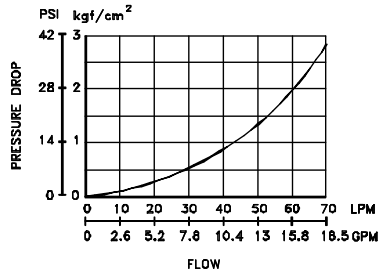
**PERFORMANCE CURVES**

TEST FLUID VISCOSITY : 35 cSt (175 SSU)  
TEST TEMPERATURE : 50°C (122°F)

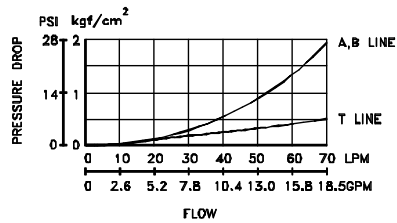
PILOT FLOW CHART



PRESSURE DROP AT SPOOL  
FULLY OPENED (P-LINE)



PRESSURE DROP (P1-P2)



ABINA S.L



**PRESSURE CONTROLS**

MODULAR PRESSURE REDUCING VALVE **MPR 03 SERIES**

---

2-33

Pol Ind Les Comes C/Alemania, 43 Nave 1  
08700 Igualada (Barcelona)  
Telf 93 805 24 34 Fax 93 805 25 44  
[www.abina.com](http://www.abina.com)  
email: [info@abina.com](mailto:info@abina.com)

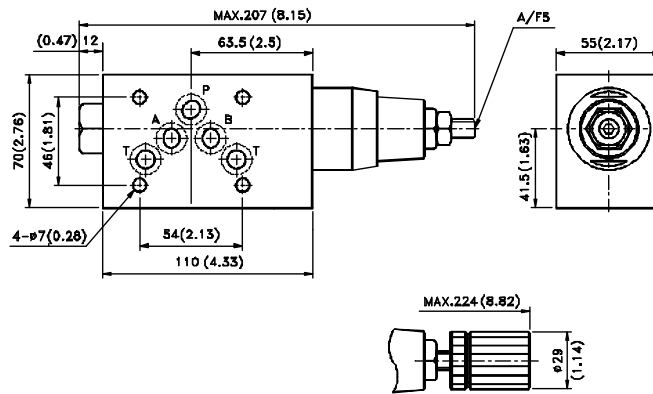


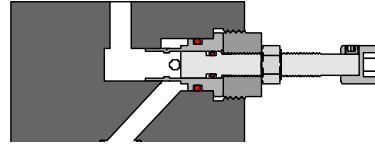


**INSTALLATION DIMENSIONS**

MPR - 03\* - \* - \* - 30

UNIT: mm(inch)  
 WEIGHT : 3.4kgs(7.50lbs)





**SYMBOLS**



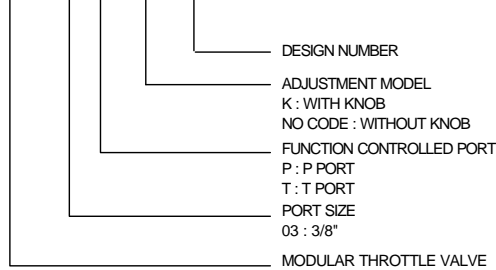
P T B A  
MT-03P



P T B A  
MT-03T

**HOW TO ORDER**

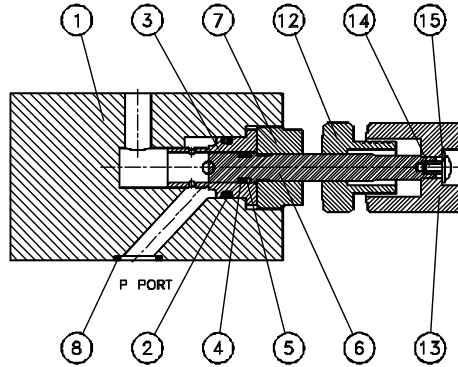
**MT - 03 P - K - 30**



- DESIGN NUMBER
- ADJUSTMENT MODEL
- K : WITH KNOB
- NO CODE : WITHOUT KNOB
- FUNCTION CONTROLLED PORT
- P : P PORT
- T : T PORT
- PORT SIZE
- 03 : 3/8"
- MODULAR THROTTLE VALVE

**SPECIFICATIONS**

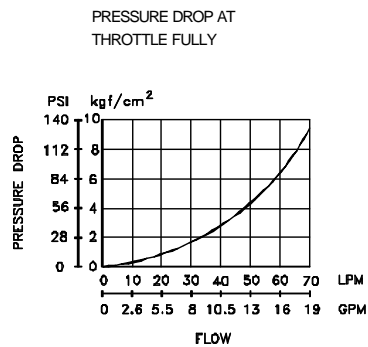
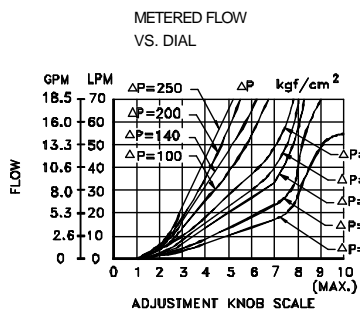
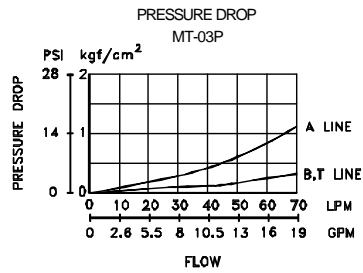
MAX. OPERATING PRESSURE	210 kgf/cm <sup>2</sup> (3000 PSI)
MAX. FLOW CAPACITY	70 LPM (20 GPM)



NO.	DESCRIPTION	SPEC.	NO.	DESCRIPTION	SPEC.
2	O-RING	P16(70 )	5	BACK-UP RING	P7
4	O-RING	P7(70 )	8	O-RING	AS568-014(90 )

**PERFORMANCE CURVES**

TEST FLUID VISCOSITY : 35 cSt (175 SSU)  
TEST TEMPERATURE : 50°C(122°F)



2-36

ABINA S.L



**FLOW CONTROLS**  
MODULAR THROTTLE VALVE MT 03 SERIES

---

2-37

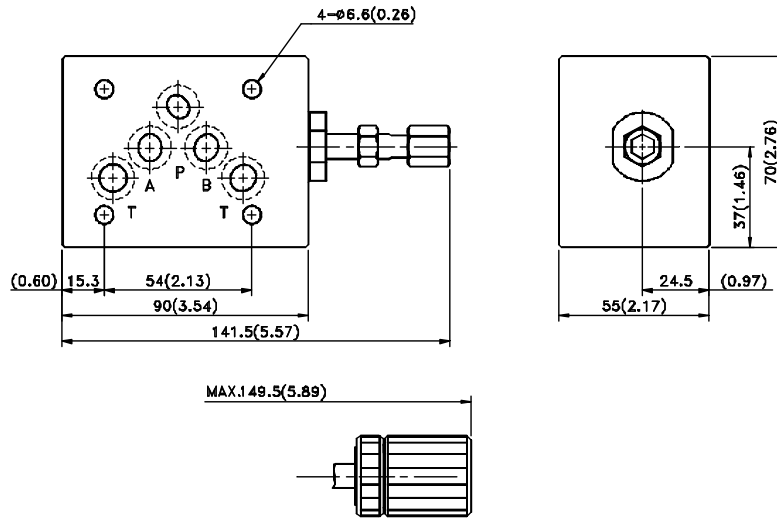
Pol Ind Les Comes C/Alemania, 43 Nave 1  
08700 Igualada (Barcelona)  
Telf 93 805 24 34 Fax 93 805 25 44  
[www.abina.com](http://www.abina.com)  
email: [info@abina.com](mailto:info@abina.com)



**INSTALLATION DIMENSIONS**

MT - 03P - K - 30

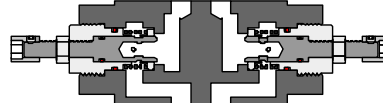
UNIT: mm(inch)  
WEIGHT 2.4kgs(5.29lbs)



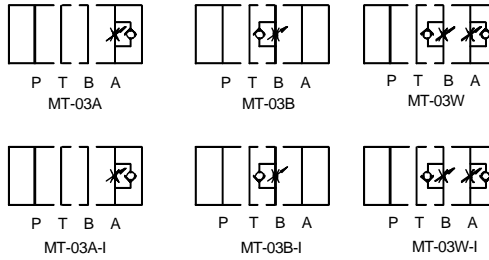


**FLOW CONTROLS**

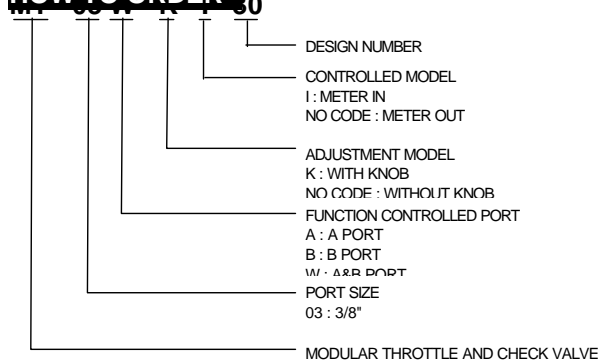
MODULAR THROTTLE AND CHECK VALVE MT 03 SERIES



**SYMBOL**

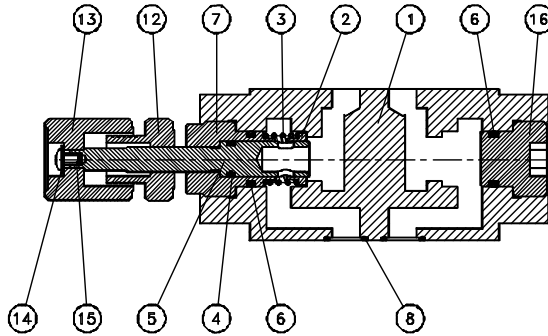


**HOW TO ORDER**



**SPECIFICATIONS**

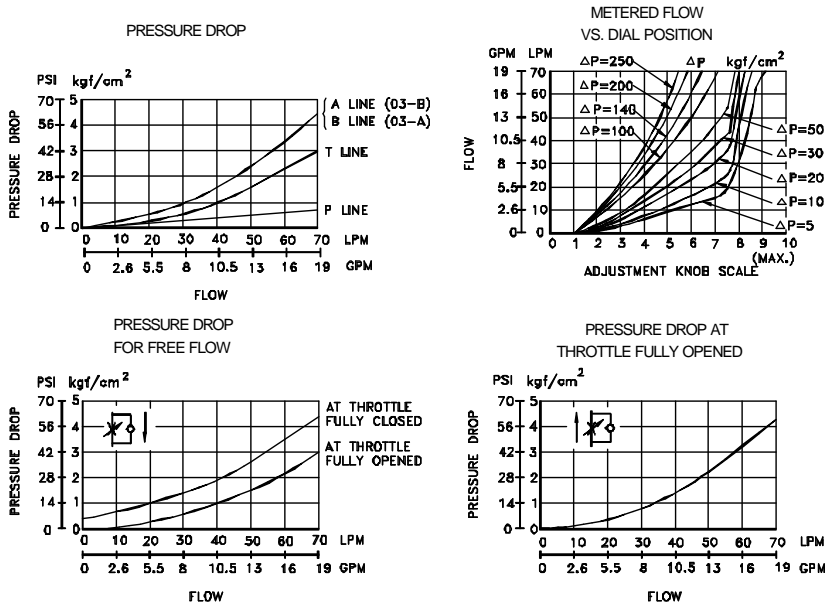
MAX. OPERATING PRESSURE	210 kgf/cm <sup>2</sup> (3000 PSI)
MAX. FLOW CAPACITY	70 LPM (20 GPM)



NO.	DESCRIPTION	SPEC.	NO.	DESCRIPTION	SPEC.
4	O-RING	P10(70°)	8	O-RING	AS568-014(90°)
6	O-RING	P16(70°)			

**PERFORMANCE CURVES**

TEST FLUID VISCOSITY : 35 cSt (175 SSU)  
TEST TEMPERATURE : 50°C (122°F)

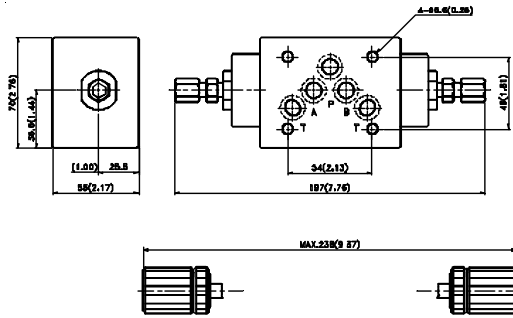




**INSTALLATION DIMENSIONS**

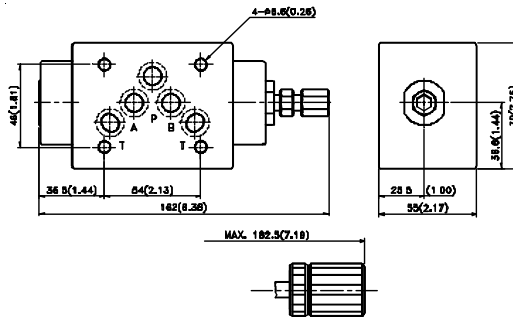
MT - 03W - \* - \* - 30

UNIT: mm(inch)  
WEIGHT: 2.8kgs(6.171lbs)



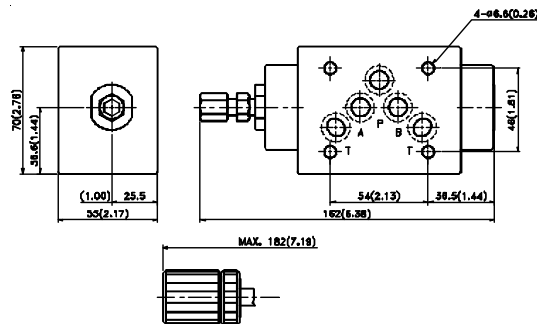
MT - 03B - \* - \* - 30

WEIGHT: 2.4kgs(5.29lbs)



MT - 03A - \* - \* - 30

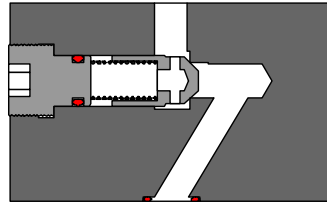
WEIGHT: 2.4kgs(5.29lbs)



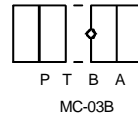
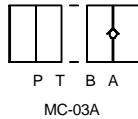
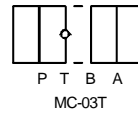
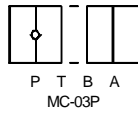




**DIRECTIONAL CONTROLS**  
MODULAR CHECK VALVE MC 03 SERIES

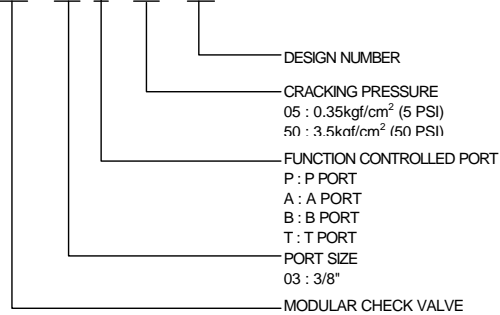


**SYMBOLS**



**HOW TO ORDER**

**MC - 03 P - 50 - 30**

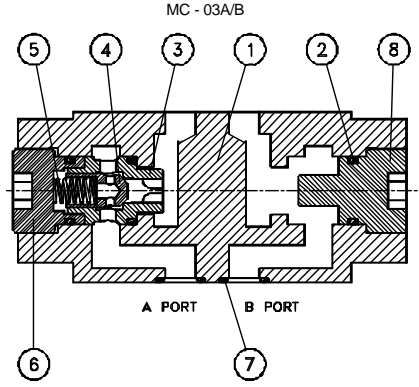
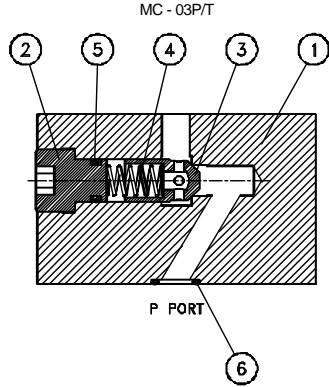


**SPECIFICATIONS**

MAX. OPERATING PRESSURE	210 kgf/cm <sup>2</sup> (3000 PSI)
MAX. FLOW CAPACITY	70 LPM (18.5 GPM)



**DIRECTIONAL CONTROLS**  
MODULAR CHECK VALVE MC 03 SERIES

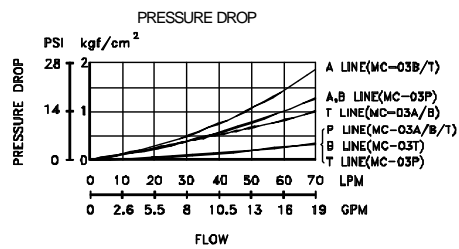
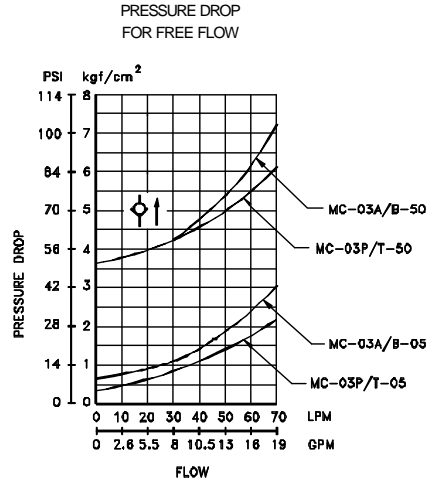


NO.	DESCRIPTION	SPEC.
5	O-RING	P10(90°)
6	O-RING	AS568-014(90°)

NO.	DESCRIPTION	SPEC.
2	O-RING	P18(90°)
7	O-RING	AS568-014(90°)

**PERFORMANCE CURVE**

TEST FLUID VISCOSITY : 35 cSt (175 SSU)  
TEST TEMPERATURE : 50°C (122°F)



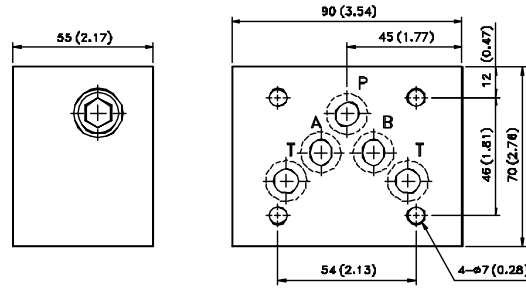


DIRECTIONAL CONTROLS  
MODULAR CHECK VALVE MC 03 SERIES

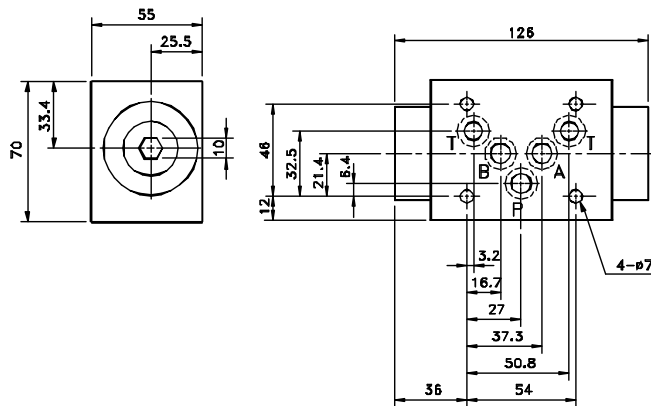
**INSTALLATION DIMENSIONS**

MC - 03P/T - \*\* - 30

UNIT: mm/(inch)  
WEIGHT: 2.3kgs(5.07lbs)

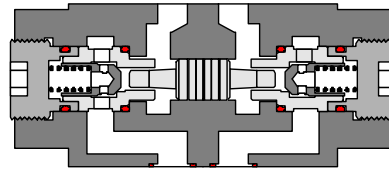


MC - 03A/B - \*\* - 30

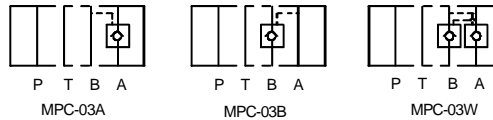




**DIRECTIONAL CONTROLS**  
MODULAR PILOT CHECK VALVE MPC 03 SERIES

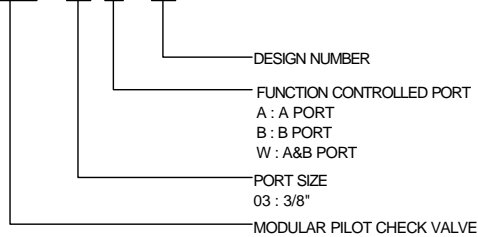


**SYMBOLS**



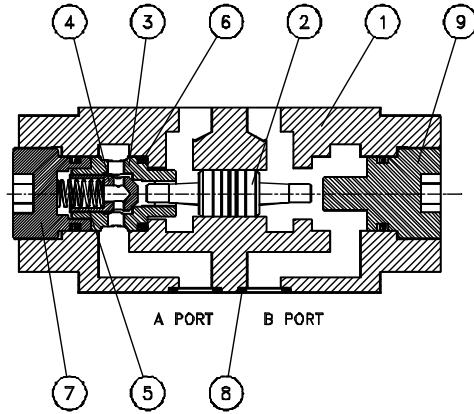
**HOW TO ORDER**

**MPC - 03 W - 30**



**SPECIFICATIONS**

MAX. OPERATING PRESSURE	210 kgf/cm <sup>2</sup> (3000 PSI)
MAX. FLOW CAPACITY	70 LPM (18.5 GPM)
CRACKING PRESSURE IN FREE FLOW	4 kgf/cm <sup>2</sup> (57 PSI)
PILOT RATIO	1 : 3

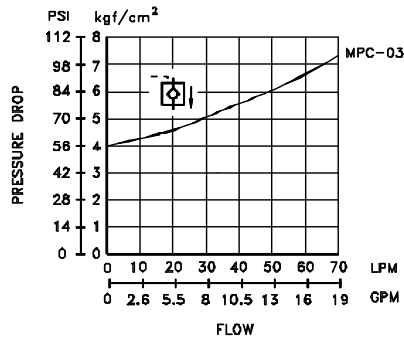


NO.	DESCRIPTION	SPEC.
6	O-RING	P18(90°)
8	O-RING	AS568-014(90°)

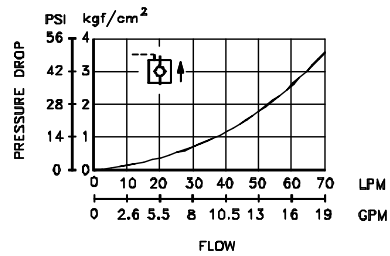
**PERFORMANCE CURVES**

TEST FLUID VISCOSITY : 35 cSt (175 SSU)  
 TEST TEMPERATURE : 50°C (122°F)

PRESSURE DROP FOR FREE FLOW



PRESSURE DROP FOR REVERSED CONTROLLED FLOW





**INSTALLATION DIMENSIONS**

MPC - 03\* - 30

UNIT: mm/(inch)  
WEIGHT: 2.7kgs(5.95lbs)

